

MAX-600 Series Handheld OTDR



- Applicable fiber: SM/MM
- ≤0.8m extra-short event dead zone
- Up to 45/43dB high dynamic range
- Memory storage >80,000 OTDR traces
- With power meter&VFL, Map Link (iOLA)
- 7.0-inch outdoor-enhanced touch screen

12-hrs Battery Life

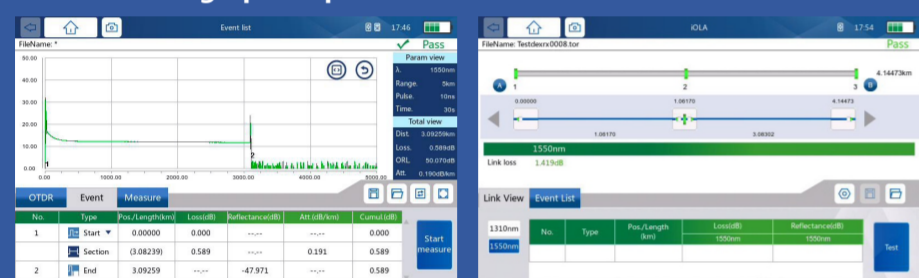
Map Link (iOLA)

FTTx PON Long-haul

RJ45 Testing

7-inch Touch Screen

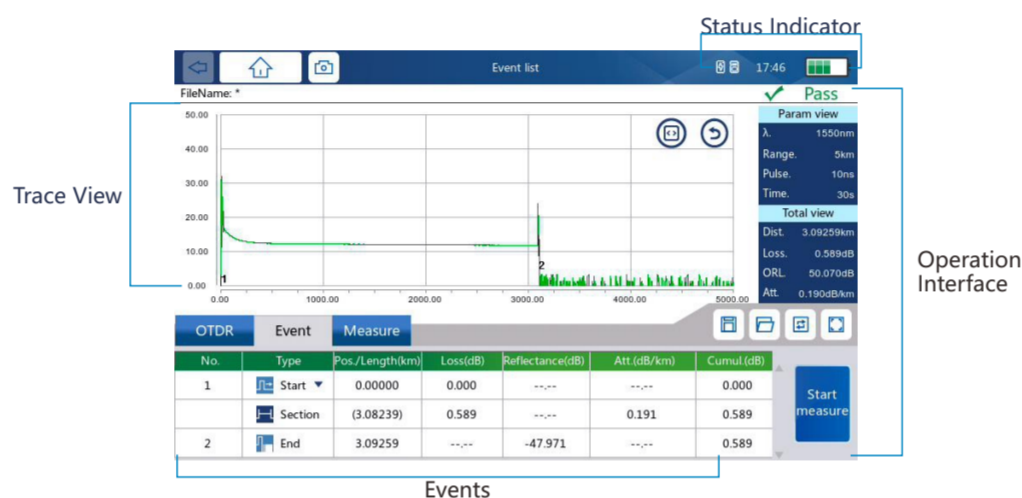
► Outstanding optical performance index



Abstract curve visualization

Even dead zone ≤0.8m
Attenuation dead zone ≤4m

Display



Packing Information

- ◆ MAX-600 series OTDR
- ◆ AC Adapter
- ◆ Built-in lithium battery
- ◆ Extra connector for power meter (SC or FC)
- ◆ Calibration Certificate
- ◆ Carrying bag with shoulder strap

Complementary products



OTDR launch cable box



Fiber optic cleaner

► Connector supported (Option)



Technical Parameters

Model	MAX-600-M1	MAX-600-M3	MAX-600-M3A	MAX-600-M3S	MAX-600-M2	MAX-600-M5	MAX-600-M6	MAX-600-M4
Wavelength(nm)	1310/1550	1310/1550 /1625	1310/1550 /1650	1310/1490 /1550	1310/1550	1310/1550	1310/1550	850/1300 /1310/1550
Wavelength Accuracy(nm)	±20							
Dynamic(dB)	32/30	39/38/38		39/38/38	40/38	43/41	45/43	26/26/36/34
Event Dead Zone(m)	1.5	0.8		0.8	0.8	0.8	0.8	SM:≤0.8m, MM:≤0.8m
Atten. Dead Zone(m)	6	4		4	4	4	4	SM:≤3m, MM:≤5m
Pulse width(ns)	3ns 5ns 10ns 20ns 50ns 100ns 200ns 500ns 1μs 2μs 5μs 10μs 20μs							
Distance range	100m 400m 1.5km 3km 6km 12km 25km 50km 100km 200km 400km							
Distance Accuracy(m)	0.1(MAX-600-M1), 0.5(MAX-600-M3/MAX-600-M3A/MAX-600-M5/MAX-600-M6)							
Sampling Points	128000				256000			
Refractive Index range	1.30000~1.70000							
Linearity(dB/dB)	±(0.75m+0.005%×distance+sampling resolution)				±(0.75m+0.001%×distance+sampling resolution)			
Distance Accuracy(m)	0.1							
Loss threshold(dB/dB)	0.01							
Loss resolution(dB/dB)	0.001							
Measurement time	5s-5mins, real-time							
Real-time refresh(Hz)	4							
Power meter	+26~-50dBm, 850/1300/1310/1490/1550/1625nm, FC or SC adapter							
VFL	650nm±10nm,10mW							
Display	7-inch(178 mm)outdoor-enhanced touchscreen,800x480TFT							
Interfaces	One USB 2.0 ports RJ-45x1,LAN,10/100 Mbit/s,Micro SDx1							
Storage	>10000 results(SOR or PDF)							
Battery Life	7.4V, 4600mAh lithium battery pack, supports 12 hrs run time (at max charge)							
Power consumption	<3W							
Power supply	Power supply AC/DC adapter, AC input 100-240V, 50-60Hz,DC out 12V,1.5A							
Applicable environmenty	Operating temperature range:-10°C~+50°C, Relative humidity:-40°C~+70°C							
Dimensions(WxHxD)	246.5*173.5*70mm							
Weight(including battery)	1.55kg							
Language	English, Chinese, Spanish,Russian, Italian, Portuguese,(Option for French, Russian, German, Korean & Arabic)							

Product Details

